



NAUTILUS
INTEGRATED SOLUTIONS



GENERAL CAPABILITIES

June 2021



Customer Focused Model

Foundry	Upgrading	NDT	Machining	Complex Assembly	Quality
Precision Castings up to 25,000 pounds	Heat Treat	Radiographic Inspection Up To 11" Thickness	Full-service Manual and CNC Capabilities	Hydraulic Accumulators	Level 1 / Sub Safe
AOD vessel with 18,500 lbs capacity	NAVSEA Approved Weld Repairs	Magnetic Particle Inspection	Small to Medium Scale	HEI Linkage Assembly	Navy Nuclear Approved
Laboratory		Liquid Penetrant Inspection	Large Scale (up to 5 tons)	Weapons Handling Rammer Pawl Assemblies	Three Level III Inspectors
MAGMASOFT simulation and design support		Visual Inspection		Portable Track Assemblies	ASNT National Certifications (VT/MT/PT/RT)
				Retractable Bow Plane Locking Assembly	NAVSEA 250-1500-1 Certified (VT/PT)
				Mounts & Hangers	



Strategic Partnership with Customers

Capacity

- Identification of bottlenecks and implementation of mitigation plans
- Redundant processes
- Strong production planning and LEAN manufacturing culture across organization



Vertical Integration

- Ability to onboard customers and parts from design, through complete manufacturing, inspection, and delivery
- Continuous investment in critical equipment and capabilities

No Single Points of Failure

- Multiple facilities with overlapping and complimentary capabilities
- Financially healthy backed by strong investors
- Cross training programs for critical roles
- Strong network of vendors, suppliers, and subcontractors

Strong Management Team



- Commitment to quality, on-time delivery, and customer service
- Multiple points of contact across organization
- Robust executive and middle management teams
- Provide turnkey solutions to customers



Operating Facilities

Nautilus Total					
Location	Facilities	Square Feet	Employees	Machines	Select Certifications
Northeast United States	5	127,000	172	57	Level 1 / Subsafe

Nautilus Companies

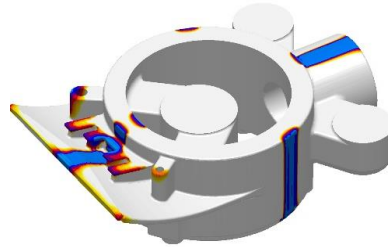
Company		
Location	South Windham, CT	Cornwall, PA
Square Footage	20,000 sq ft	107,000 sq ft
Employees	32	140
Number of Machines	20	37
Quality System	ISO 9001-2015	ASNT National Certifications (VT/MT/PT) NAVSEA 250-1500-1 Certified (VT/PT) ASME BPV Certification
Value Added Services	Assembly and Testing	NDT and Upgrading



Vertical Integration

Design & Engineering

MAGMASOFT simulations
Full-service metallurgical lab



Precision Machining

Tight tolerance, large scale, complex geometries



Casting

Non-ferrous alloys
Up to 25,000 pounds



Non-destructive testing

Radiographical, magnetic particle,
liquid penetration



Heat treat, Welding, Grinding

Navy-certified welding procedures



Assembly & Inspection

CMM, proprietary equipment, Level III
inspectors





Certifications & Materials

Select Certifications



Maintain MIL-STD, NAVSEA, ASME, and ANSI requirements



Welders certified in GMAW, GTAW, and SMAW procedures



Level 1 / Subsafe



MIL-I-45208 and NAVSEA Tech. Pub.



ASME BPV certified



Comprehensive in-house NN-801 security program



ITAR Part 122 registration



ISO 9001:2015



Level III NDT personnel (ASNT-TC-1A)

Select Materials

Casting

Copper nickel
Stainless steel
Carbon steel
Inconel
Martensitic stainless steel

Machining – Metals

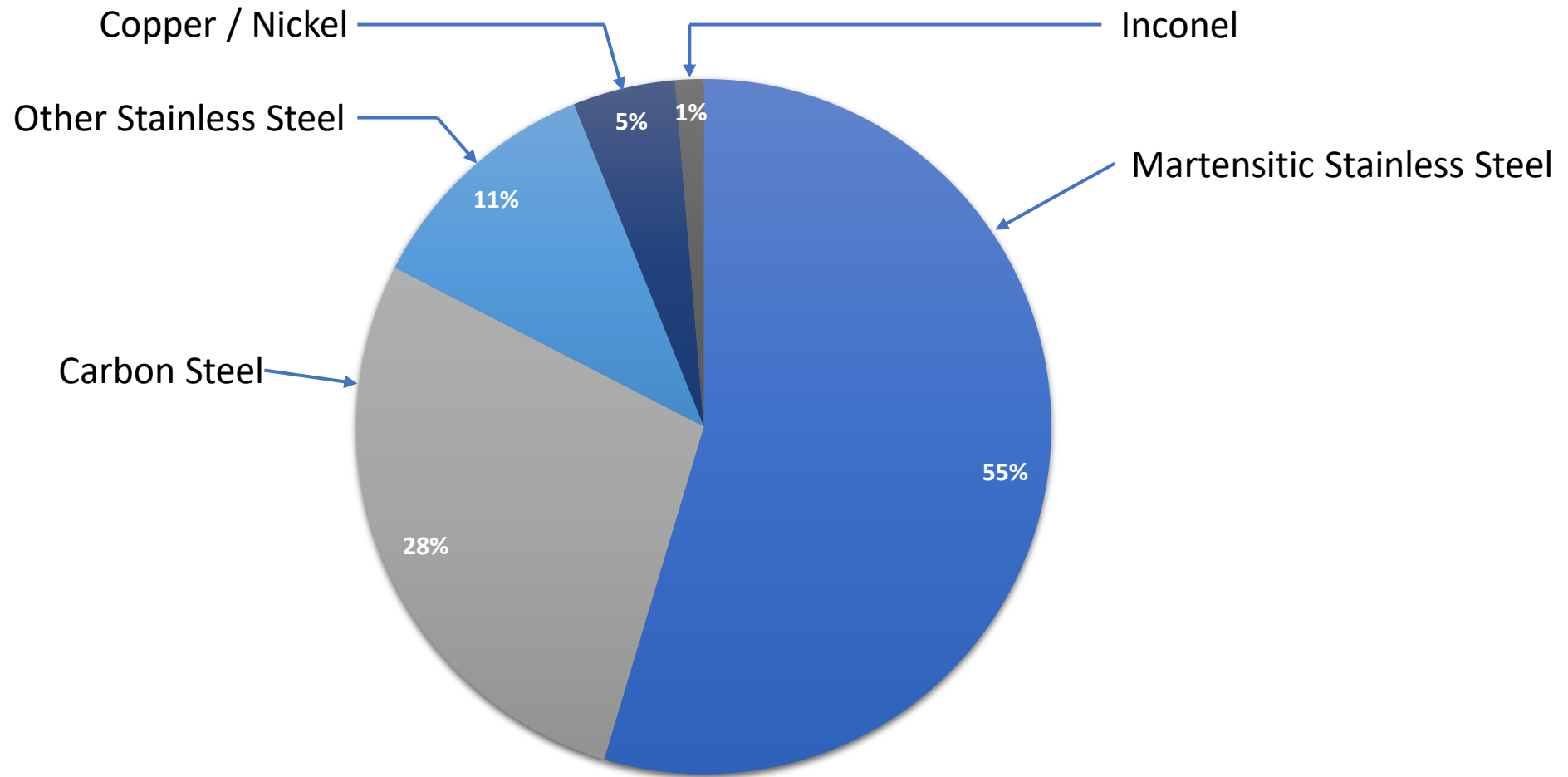
Aluminum alloys
Copper alloys
Nickel aluminum bronze
Stainless steel
Cast Iron
Nickel copper alloys

Machining – Plastics

Delrin
Torlon
Nylon
Ultem
Urethane

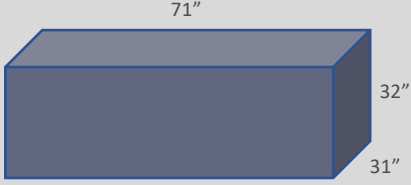
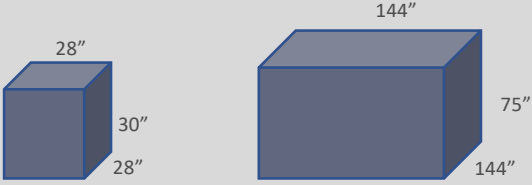
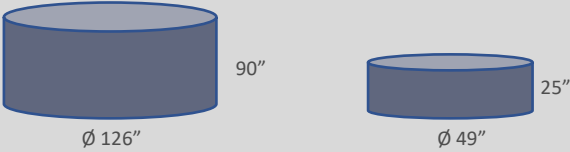
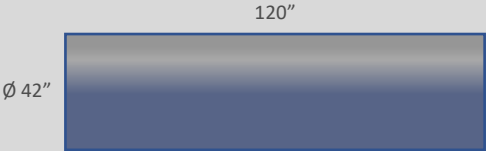


Alloys Poured





Machining Size Capabilities

Vertical CNC milling		Up to 31" width x 32" height x 71" length
Horizontal CNC milling		CNC: Up to ~30" cube (pallet changer available) Manual: Up to 144" width x 75" height x 144" length Boring mill: Up to 47" width x 55" height x 59" length (rotary table)
Vertical turning		CNC: Up to 49" diameter x 25" length Manual: Up to 126" diameter x 90" length
Horizontal turning		CNC: Up to 25" diameter x 42" length CNC: Up to 18" diameter x 80" length Manual: Up to 42" diameter x 120" length



Equipment List

Mill - Vertical

Quantity	Description
1	120" Summit with digital readout
1	54" Bullard with digital readout
1	80" Summit with digital readout
5	Bridgeport (Vertical)- 9" x 48" table, 4 with Digital Readouts
1	HAAS TM-1 30"x12.0"x16" X,Y,Z travels
1	HAAS VF-3 40"x20"x25" X,Y,Z travels
1	Lagun 11" x 58" with Digital Readout W/8" Riser
1	MAZAK NEXUS 410C 22"x16.1"x20" X,Y,Z travels
1	MAZAK NEXUS 510C 41"x20"x20" X,Y,Z travels
1	MAZAK NEXUS 700D 60"x27"x26" X,Y,Z travels
1	MAZAK VTC 200C 66"x20"x20" X,Y,Z travels
1	MAZAK VTC 300C 65"x30"x26" X,Y,Z travels
1	Monarch VMC 6032, 24 tools; 32" X 72" table
1	ProtoTRAK DPM SX5 12" X 50" Programmable Mill
1	ProtoTRAK FHM7 14" X 76" Programmable Mill
1	Toyoda BM 1020, 30 tools; with Tsudakoma Rotary (10" Dia.) 23.6" X 44" table
1	Toyoda BM 1400, 30 tools; with Tsudakoma Rotary (16" Dia.) 31.5" X 59" table
1	TRAK DPM5 40"x20"x23.5" X,Y,Z travels
1	TRAK K3 32"x16.0"x16" X,Y,Z travels

Mill - Horizontal

Quantity	Description
1	5" G & L 48" x 122" table with digital readout
1	5" G & L 48" x 88" Table with digital readout
1	5" G & L Fraser, 72" x 144" table with 3-axis Numeriset readout
1	Doosan HM5000, (2) 19.7" Square pallets, 90 tools, 31.5" X 25.6" Xv 25.6" X, Y, Z travels, Full 4th axis.
1	Matsuura MC-600H,(2) 18" Square pallets, 50 tools, 24" X 18" X 19" X, Y, Z travels, Full 4th axis.
1	MAZAK NEXUS 5000-II 28.7"x28"x29" X,Y,Z travels
1	MAZAK PFH-4800 22"x24"x23" X,Y,Z travels
1	Sajo (Horizontal) – 11" x 52" table
2	Tool-Mex 12.5"X51" Table with Digital Readout. Vertical Head Attachment
1	YAMA SEIKI MB-1512 59"x47"x35.4" X,Y,Z travels



Equipment List (Continued)

Lathe

Quantity	Description
2	13" x 40" Lagun with Digital Readout
1	16" x 30" American with Digital Readout
1	19" x 60" HMT with Digital Readout
1	19" x 80" Summit with Digital Readout
1	20" x 54" VDF Boehringer with Digital Readout
1	22" x 120" Tool-Mex Gap Bed with Digital Readout
1	25" x 120" Tool-Mex with Digital Readout
1	36" x 120" Summit with Digital Readout
1	42" x 120" Summit with Digital Readout
2	FRYER EASY TURN ET30 CNC 30.0" Swing / 18.0" Max Dia / 57.0" Max Length
1	HARRISON ALPHA 400 PLUS Lathe
2	Hitachi Seiki 40 G; 39" Swing, 42" Between Centers
1	Hitachi Seiki 50 G; 39" Swing, 42" Between Centers
1	Hitachi Seiki Hi-Tec Turn; 25S; 20" Swing, 24" Between Centers
1	MAZAK 250 Quick Turn 24.0" Swing / 13.7" Max Dia / 18.7" Max Length
1	MAZAK NEXUS 250-II MSY 26.5" Swing / 14.7" Max Dia / 21.2" Max Length
1	MAZAK NEXUS 350 Quick Turn 26.7" Swing / 16.6" Max Dia / 23.8" Max Length
1	MAZAK NEXUS 350-II MSY 26.5" Swing / 14.7" Max Dia / 21.2" Max Length
1	Mori Seiki NLX2500; 18" Swing, 28" Between Centers
1	Okuma LB45II/1000; 26" Swing, 42" Between Centers
1	Okuma V100R VTL; 49" Swing, 35" Turning Length
1	TRAK TRL 1845 SX Lathe

Other

Quantity	Description
1	Blanchard Vertical Grinder, 42" Round Table
1	Cad-Cam with CREO 7.0 and Applicon
1	Capable of receiving the following by Internet, GP4, Dwg. Files and converters associated with Master Cam DNC Downloads



Contact Information

Key Contact Information

Chief Revenue Officer

Devin Corn
dcorn@nautilusis.com

Sales Manager

Doug Bicher
dougb@prlinc.com

Sales Manager

Ryan Tucker
ryant@prlinc.com